

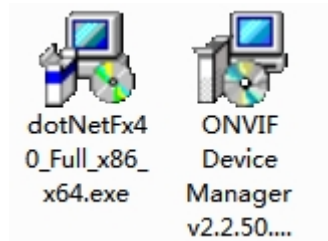
ONVIF Test tool

1. Onvif Device Manager (ODM) installation:

Software download: for example, visit at <https://sourceforge.net/projects/onvifdm/>



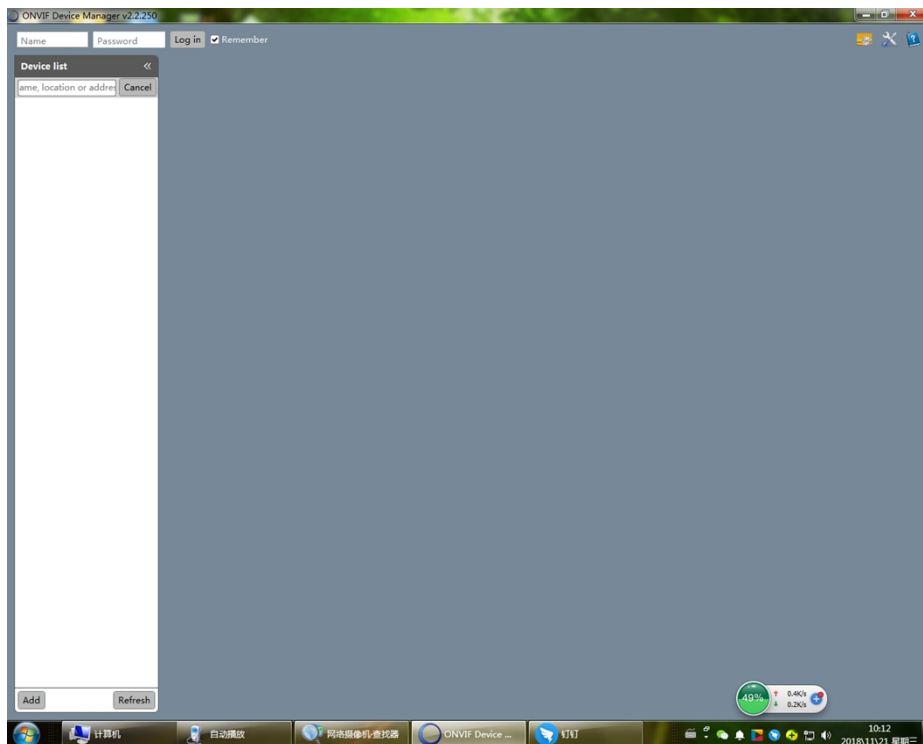
install "dotNetFx40_Full_x86_x64.exe, then install ODM V.2.2.50 version



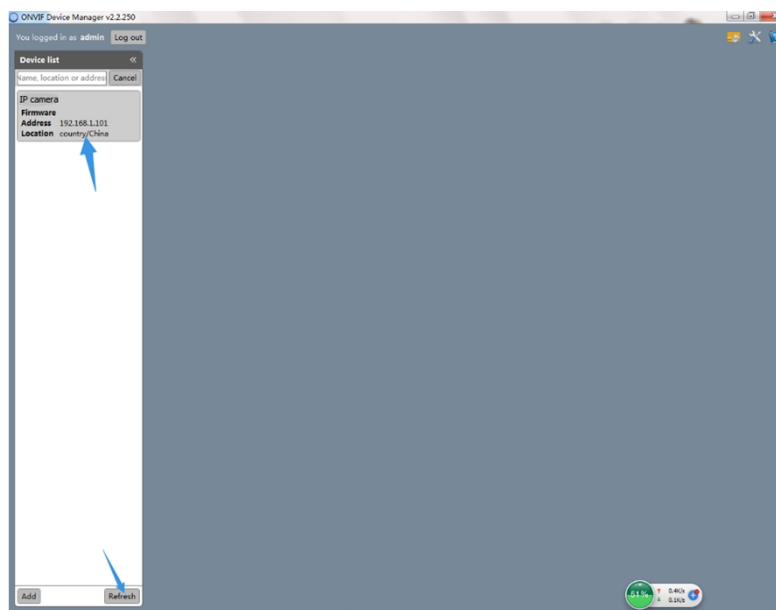
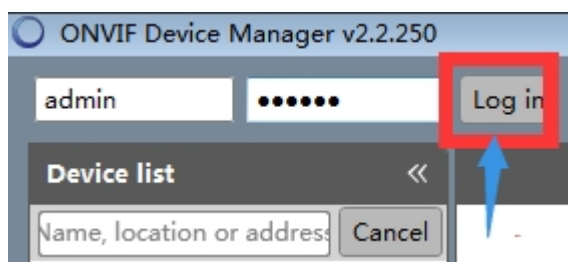
2.Connect computer and IP camera in the same local area network via router or switch, then open ODM;



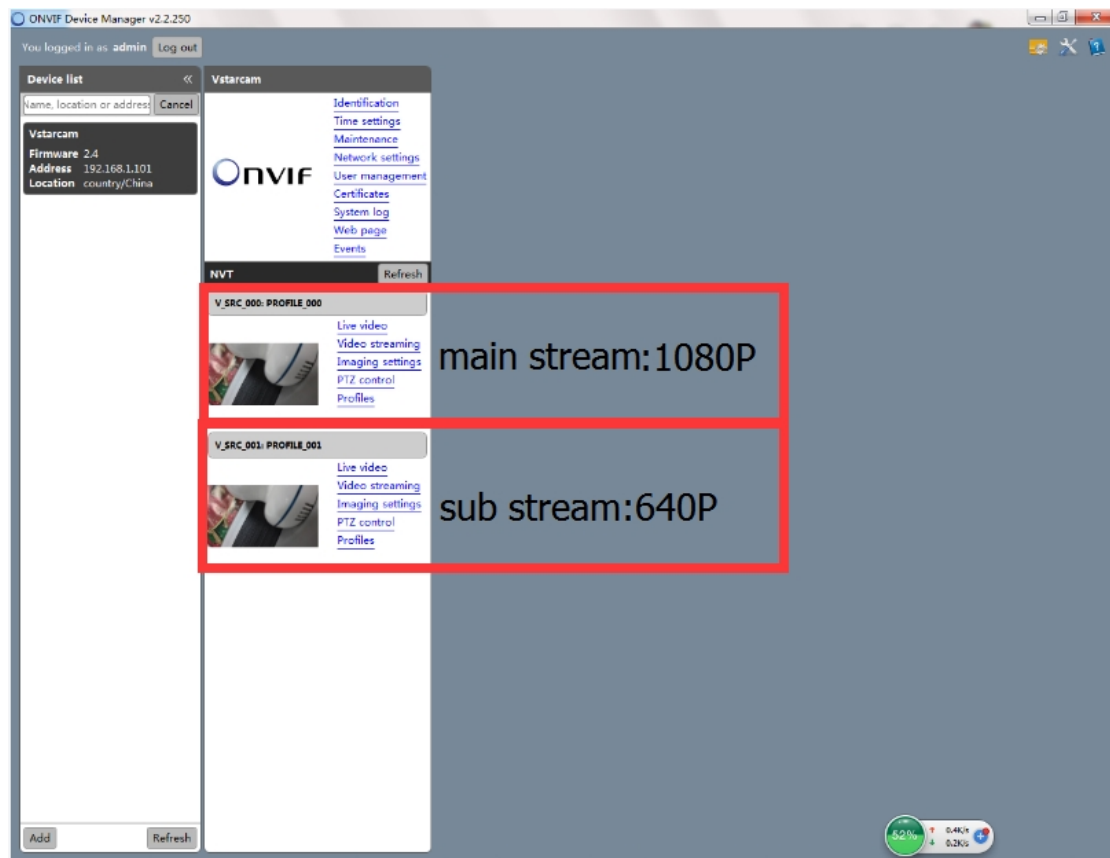
3.Open ODM The software version is V2.2.250,



4, input camera username and password, username is admin, initial password is 888888--->click on “log in”----->Fresh----->click on “Camera IP address”



5, you can see there are two streams in ODM main page: one is main stream, the other is sub stream.



Main stream

sub stream

