

How to get live stream via RTSP

If you want to stream live video via RTSP, please follow the steps below:

Step one: Confirm basic info required.

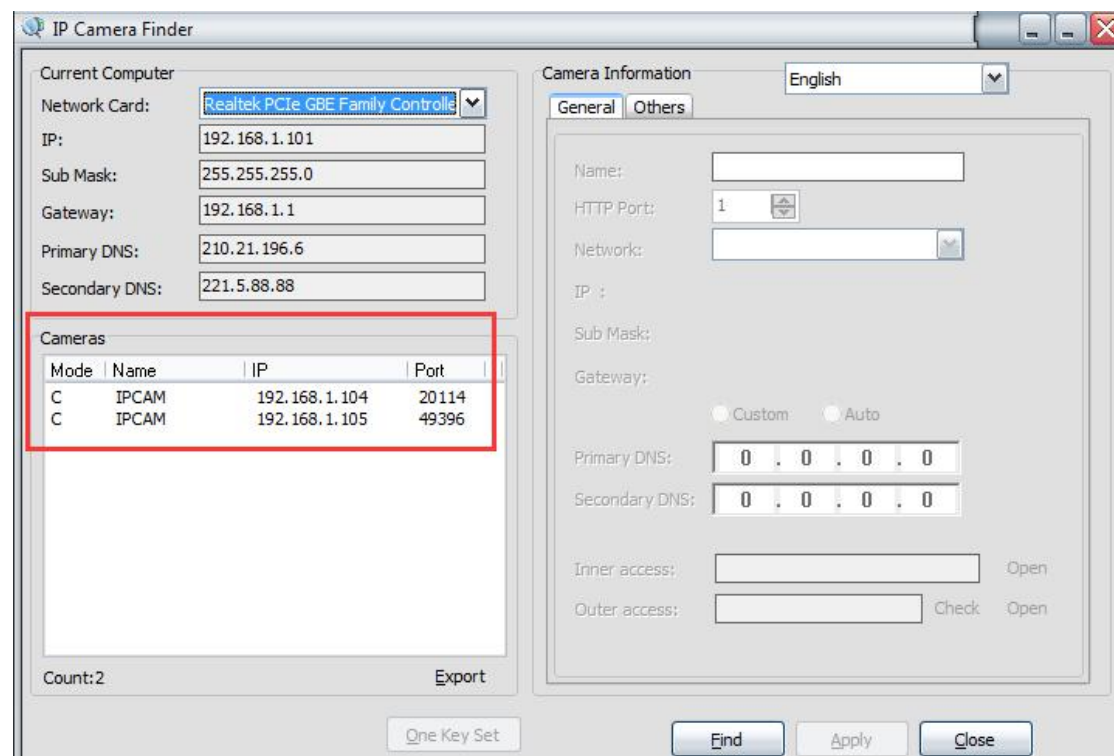
The basic info includes **Username and Password** of the camera, **LAN ip address and RTSP port number**(the default RTSP port of VStarcam camera is **10554**).

How to get the LAN ip address of the camera?

Currently, you can find the camera's LAN IP via our software IP Camera Finder, which can be downloaded from the link below:

<http://www.ey44.so/download/>

After you launch the finder, you will find the ip address of the camera on the right side of the finder(make sure the camera is in the same Lan with the computer that installed this finder).



Of course, you can find the IP address by other ways such as logging into your router's web interface and find the camera's IP.

Step Two: Stream video in VLC player

Download the VLC player from the internet, launch it, go to **Media—Open the network stream**—input the RTSP link to the '**Input the network URL**', the URL should be as **rtsp://camera's username:camera's password@camera's lan ip:10554/udp/av0_0** , for example, if your camera's user/password are: admin/888888 and lan ip is 192.168.1.126, then you can use the following URL to access the camera in VLC player.

rtsp://admin:888888@192.168.1.126:10554/udp/av0_0

Make sure the URL has been correctly input, then click on '**play**', you will get live video.



Please note that the RTSP works only in LAN, does not work remotely.