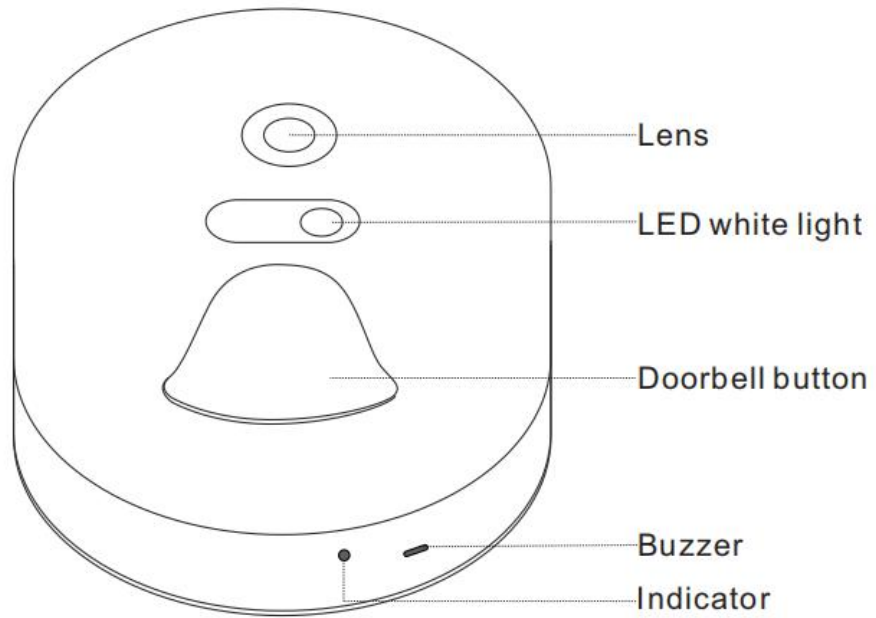


1. Product description



Outdoor device

Picture resolution: 480X320

Transmission distance: 30 meters

Image sensor: 1/4 CMOS

Night vision mode: 1pc white light

Lens: 100° , F2.4 aperture

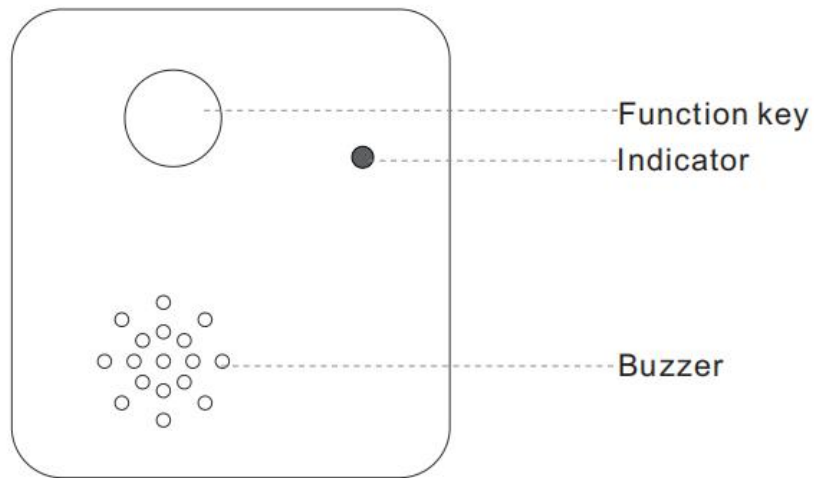
Power supply: 2pcs AAA batteries

Transmission: 433MHz RF

Installation: 3M glue or screw fixed

Alarm: buzzer

Indoor device



Data sending: Wi-Fi 2.4G

Transmission distance: RF 30 meters + Wi-Fi 30 meters

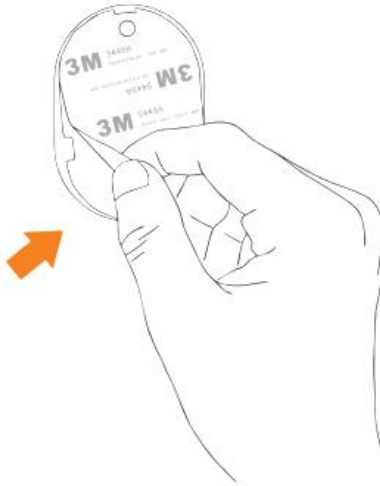
Data receiving: RF 433MHz

Transmission: RF + Wi-Fi

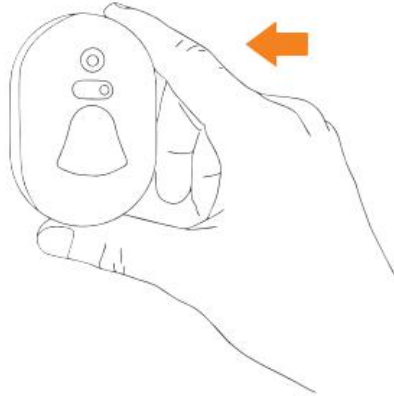
Rated voltage: Wide voltage 100V-240V AC

2. Installation and battery change

2.1 Installation of the Doorbell



Remove the 3M release paper from the back of the outdoor unit.



Stick it to the door or wall firmly. Please make sure the surface of the door/wall that the doorbell stick to is clean and smooth.

Note:

A. It is not recommended that to install the doorbell on metal doors (iron gates or aluminum alloy doors etc.), otherwise it may lead to problems that the indoor and outdoor devices can't communicate with each other or transmit data.

B. If the surface of the door/wall that the doorbell stick to is not clean and smooth, the 3M glue is easy to fall off.

2.2 Battery change

After the outdoor unit is installed, if you need to change the battery, you can push up the shell, (please refer to the following picture), remove it and replace the battery.



After the battery is replaced, please pull down the shell to lock it up(Please refer to the picture below).

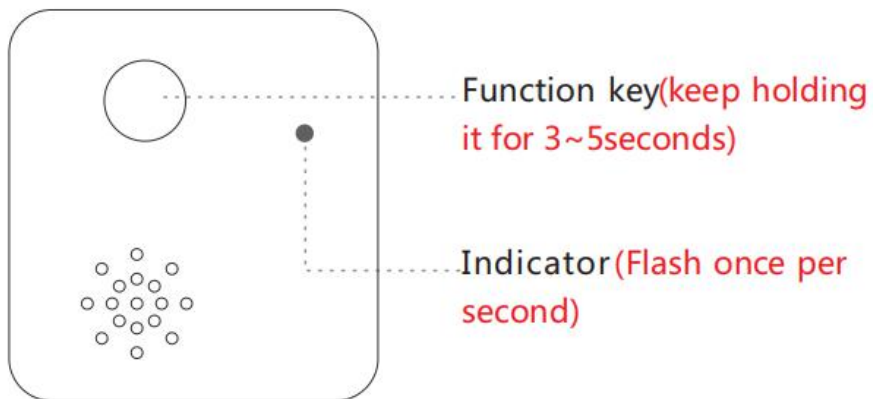


3. Reset

Reset(Re-configure the Wi-Fi network)

Power on the indoor unit, long pressing the function key for 3~5 seconds, it will make doorbell sound and the indicator will flash quickly, release the key, the indicator will flash once per second, which means it has been reset successfully.

Note: If the indicator does not flash once per second, please reset it again by referring to the guide above.



4. Software download

- ①Go to www.eye4smart.com to download the App.
- ②Search Eye4Smart in APP Store, Android market like Google play etc.
- ③Scan the QR code below to download.



5. Register account

Android / iOS client APP please select “Register now”, click to enter the registration page, enter user name, password, then confirm to complete the registration.

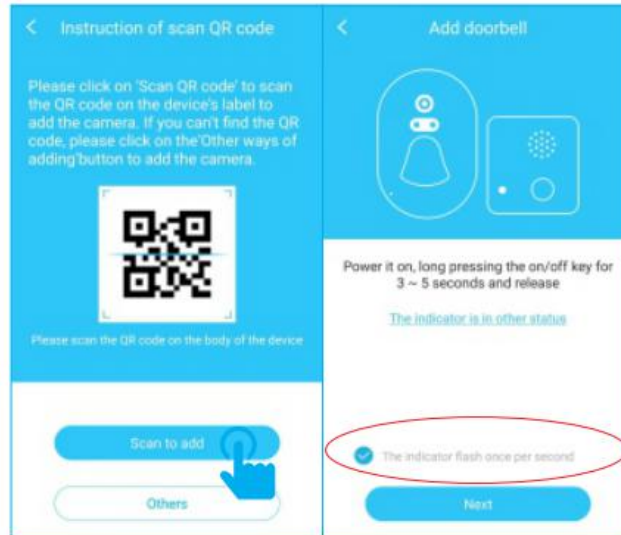
6. Add device

APP add indoor unit

There are two ways to add the doorbell: Scan QR code and other ways.

Option 1 : “scan to add”

Step 1 : Login the APP, tap the "+" button, click "Scan to add", scan the QR code on the label sticker of the indoor unit, then follow the prompt on the APP, go to **step 2**



Attention: If the indicator does not flash at once per second, please reset the indoor unit.

Reset method: Please refer to the reset method in *chapter 3 (3. Reset)*.

Step 2:The connection operation steps of different mobile platforms are as follows:



Android devices

To add the doorbell for the first time, please select the Wi-Fi that the phone connected and input the Wi-Fi password, then go to next step



IOS devices

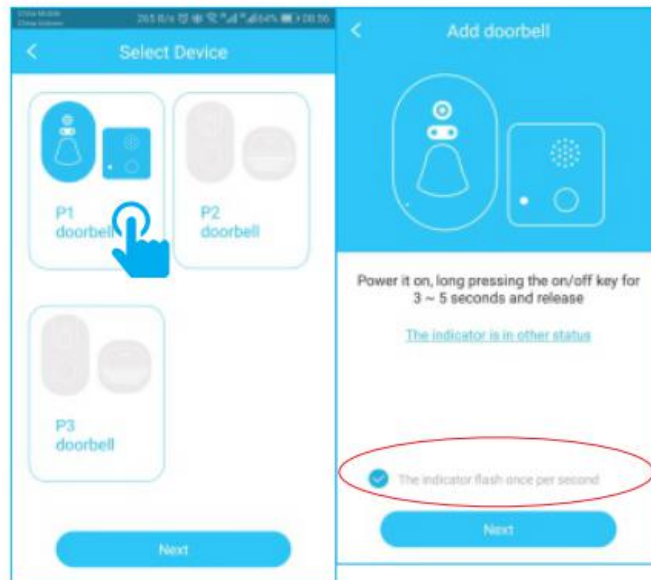
To add the doorbell for the first time, please follow the guide on the page, manually connect to the doorbell's hotspot DoorBell.XXXXXX, input the password of the hotspot: 12345678, then return to the APP, select the home WiFi,input the WiFi password and click to go to next step.

After finish the above settings of different phones, please follow the steps below:

The APP will find the smart doorcam nearby, customize the name and click "Add" to bind the doorbell. Then it will enter the automatic network configuration status(this process will lasts about 20 seconds), after successfully bound, the doorcam will be shown in the APP.

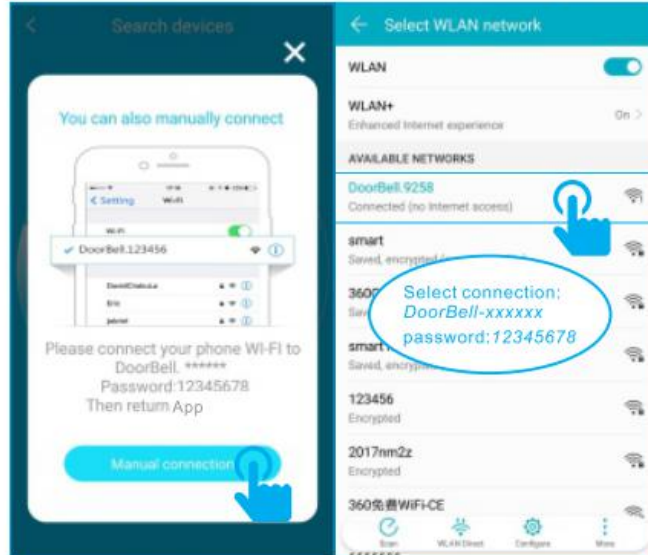
Option 2 : “others”

If it failed to add by “Scan to add”, then please refer to the “Others→Smart Doorbell→P1 doorbell”, then follow the prompt on the APP, go to **step 2** and finish the binding of the doorbell.

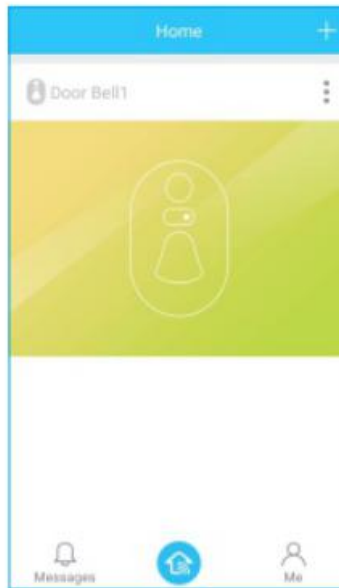


Step 3: If the APP failed to detect the doorbell, the following page will pop up, please follow the guide and the steps below to manually add the doorbell:

Tap the 'Manual connection', it will go to the WLAN page of the phone, select the doorbell's hotspot DoorBell.XXXXXX and connect, input the password: 12345678, then return to the APP and the binding page will pop up, click the 'Add it' to add the doorbell.



Note : After the indoor unit being successfully bound to the APP, the indicator on the indoor unit will be solid off. If the indicator display abnormal or the device does not work properly, please check the connection and try to reset the device and re-add it.



Note : The indoor and outdoor units have been paired when out of factory, in case of unexpected factors lead to disconnection between them, please follow the steps of code matching in chapter 8 to re-match them. After the indoor unit being successfully bound to the APP, the indicator on the indoor unit will be solid off. If the indicator display abnormal or the device does not work properly, please check the connection and try to reset the device and re-add it.

7. How to use and share

①When visitor comes to press the doorcam, the outdoor unit will take a snapshot , and push the picture to the smartphone ; the indoor unit will also issue a corresponding notice tone.



②On the home page of the APP, click the three dots on the right corner of the doorbell to go to settings of the doorbell. We can re-name the doorbell and share it here.



Note : The “share” is the way that the host user share the QR code and other users of different account scan it to add the doorbell.

8. Code matching

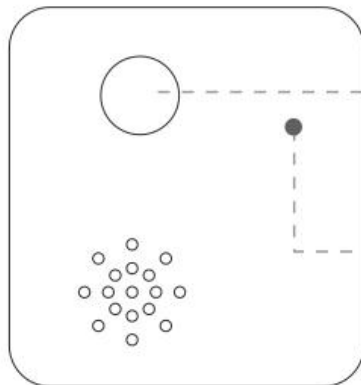
(To pair the indoor and out door devices)

Note :Please follow the steps below, to press the indoor unit first and then press the outdoor unit. Don't press them at the same time.

Step 1:

Indoor unit

To press the function key of the indoor unit three times quickly or long pressing it for 8~10 seconds, it will make doorbell sound and the indicator will flash quickly, then it will go to waiting code matching status.



Function key (Quickly press it for three times or keep holding it for 8~10 seconds)

Indicator (Flash quickly)

Step 2:

Outdoor unit

Keep holding the doorbell button on the outdoor unit for 3 seconds to send the code to the indoor unit, then the code matching will be completed. If the code matching is successful, when pressing the doorbell button on the outdoor unit, the indoor unit will make doorbell sound.



Doorbell button(Keep holding it for 3 seconds to complete the code matching.)

Service

If you need more help, please visit our FAQ :

 <http://www.eye4smart.com/faq.html>

 support@eye4smart.com