

## 1. Product Layout



**Mic:** Captures the environmental sound and fulfills two-way audio

**Lens:** 1080P HD video

**Indicator:** Indicates working status

**IR LED Light:** 8pcs SMT IR led lights, IR distance 10m

**PIR sensor:** Human body motion detector

**Reset button:** Press and hold for 10s to restore factory default

**TF slot:** Support TF card up to 128GB

## 2. Technical Specifications

**Power Supply:** 110V ~ 240V

**Network Connection:** 802.11 b/g/n Wi-Fi @2.4GHz only

**Audio:** Two-way audio with noise cancellation

**Video:** 1080P

**Lens/FOV:** 3.0mm @F2.4/150° diagonal

**Night Vision:** Dual filters, auto switch, 8pcs SMT IR led lights, IR distance 10m

**Storage:** Support TF card up to 128GB, Supports real-time recording, schedule recording and motion detection recording.

**Alarm Detection:** Supports motion detection, PIR detection coverage 10m

**Siren:** ≥95dB

**LED source:** 2 groups of white LED (4000-4500K), Lumen: 2\*800LM

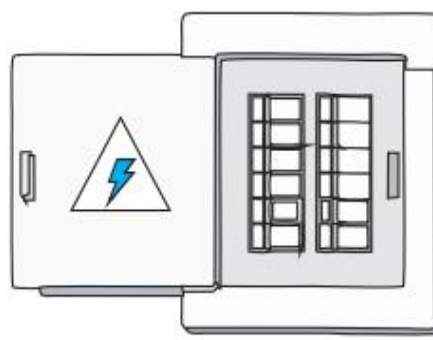
### 3. Indicator Instructions

Status of the floodlight camera	Indicator
Start to work	LED ON
Wait to be configured	Flash slow
Network configuration	Flash fast
Configuration completed	LED OFF

### 4. Installation

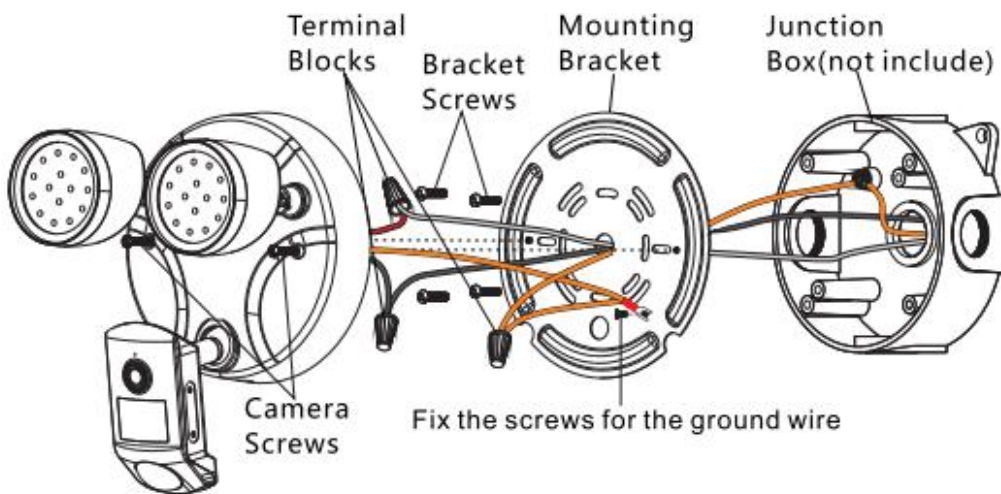
#### Step 1: Cut power off

For safety, please shut power off at the breaker before installation.



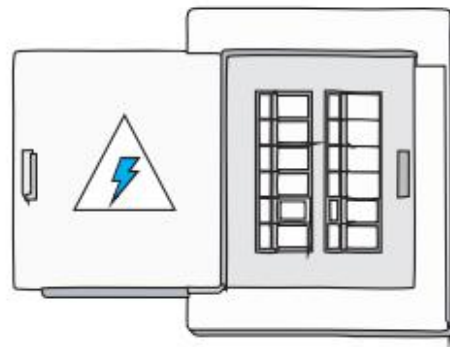
## Step 2: Installation

- ① Please refer to the picture below, pass the two power supply wires (110v-240v) and the ground wire through the mounting bracket, and then use the screws to fix the mounting bracket on the junction box
- ② Use terminal blocks to connect power supply wires
- ③ Use screws to fix the floodlight camera on the mounting bracket



## Step 3: Restore Power

Turn on the power at the breaker



## 5. APP Download

①Scan below QR code to download the APP.



②Search "HomeGenius" in APP store, Google Play or other mobile phone application store.

③Visit [<http://smart.eyecloud.so/appdown.html>] to download the APP.

## 6. Register

Choose "Faster Register", then enter your account and password to sign in.

## 7. Adding Devices

After sign in the APP, please click "+" in the top right corner, there are two ways to add it, "Scan QR code" and "Others".

**Note:** If "Scan QR code" adding method failed, please try "Others" method to add the device.

### 7.1 Scan QR Code

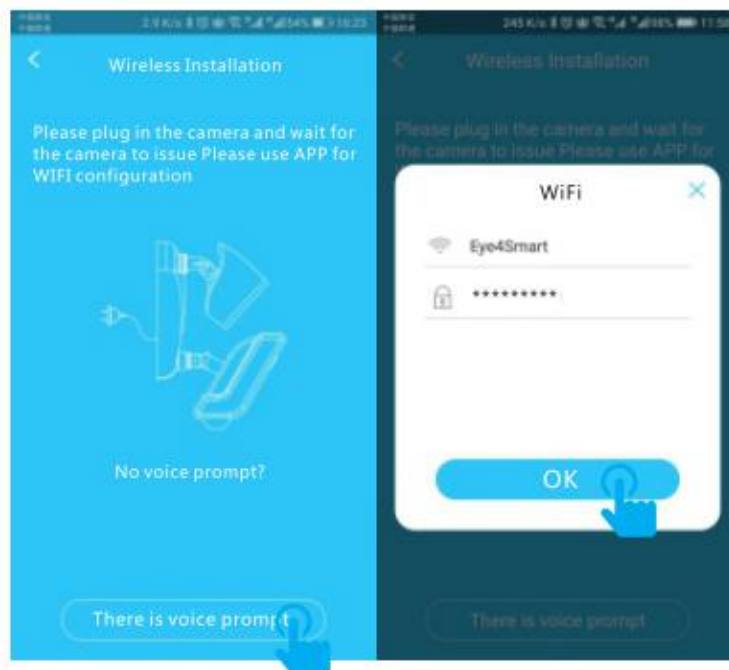
Please power on the floodlight camera, waiting about 30 seconds until the reboot of floodlight camera is finished, then it will send voice prompt for WiFi configuration.

(If there is no voice prompt, please reset the floodlight camera by pressing the reset button about 10 seconds. If reset successfully, it will prompt "reset completed, will restart the device.")

① Sign in the APP, please click "+" in the top right corner to add the device. Click "Scan to add", please scan the QR code on the body of device. (If you could not find the QR code, please click "Others" to add the device. )

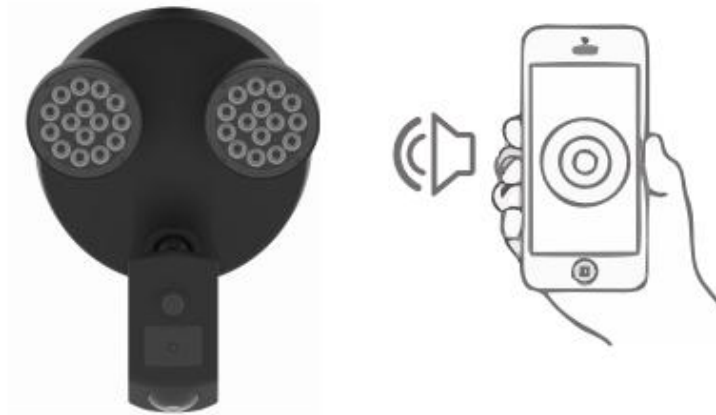


② Once heard the prompt "Please use APP for WiFi configuration", please click "There is voice prompt". For the first time, please select the WiFi that your mobile phone connected and enter the password, then click "OK" to next step.

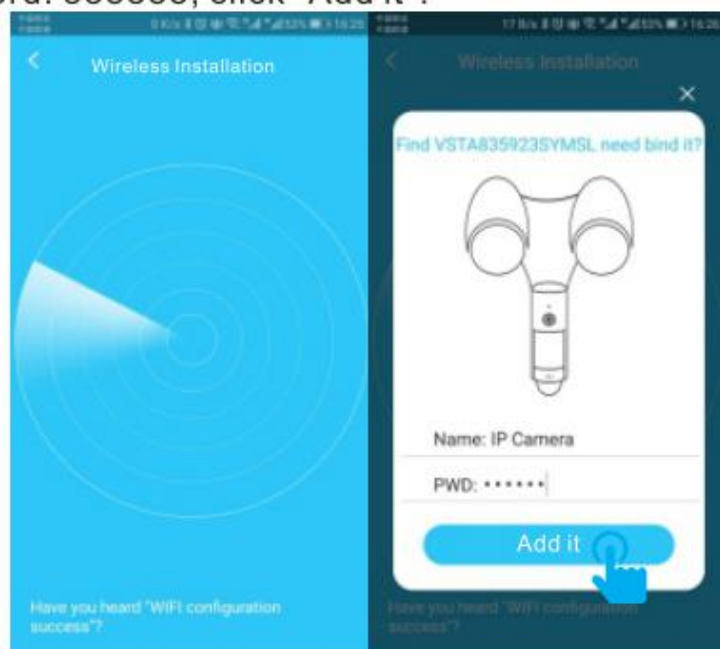




③ During the configuration, please keep your cellphone and floodlight camera within 3 meters, at the same time, please adjust the sound to the maximum. Click "send" button on the APP, to send the configuration signal to the floodlight camera.



④ After the floodlight camera prompts "WiFi configuration success", please wait about 10 seconds, it will show the page "Add it", please enter the initial password: 888888, click "Add it".



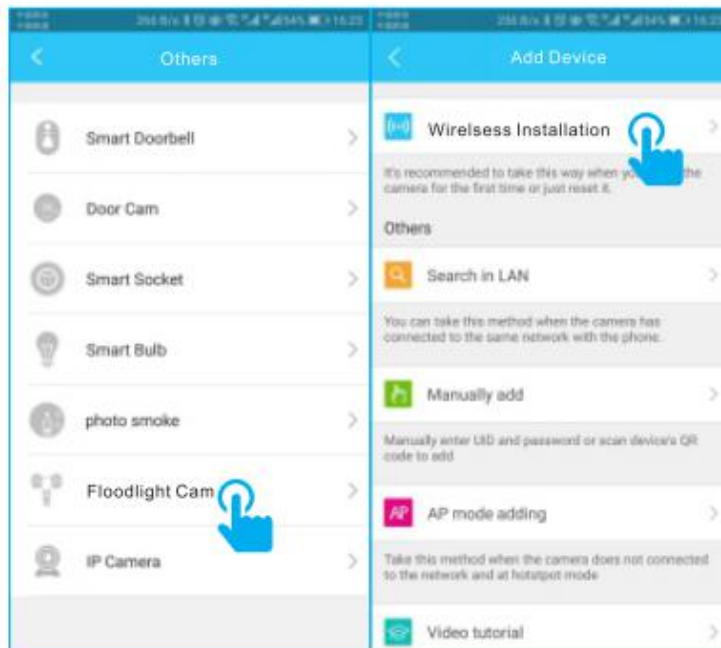
**Note:** During the process, if it prompted that WiFi configuration success but the binding page does not pop up, please return to home page, select "Others"→"Floodlight Cam"→"Search in LAN" or "Manually add" to bind the floodlight camera.

## 7.2 Others

If you could not find the QR code on the body of device, please click "Others" to add the device.

- ① Sign in the APP, click "+" on the top right corner, select "Others"→"Floodlight Cam".
- ② Select wireless installation, please refer to "wireless installation instruction" and APP voice prompt to finish the setting.

**Note:** Please refer to the ②③④ steps in the last chapter 7.1 "Scan QR Code" to finish the wireless installation settings.

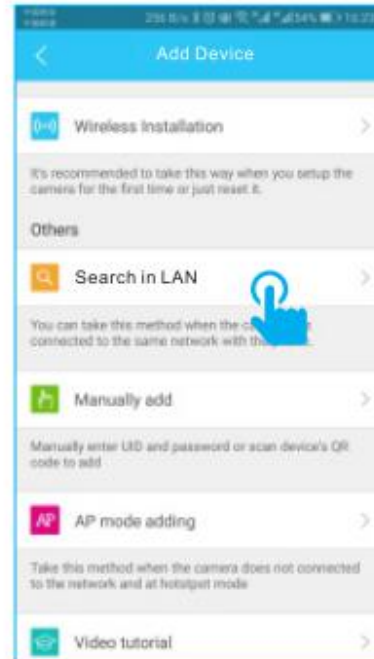


**Note:** During the process, if it prompted that WiFi configuration success but the binding page does not pop up, please return to home page, select "Others"→"Floodlight Cam"→"Search in LAN" or "Manually add" to bind the floodlight camera.

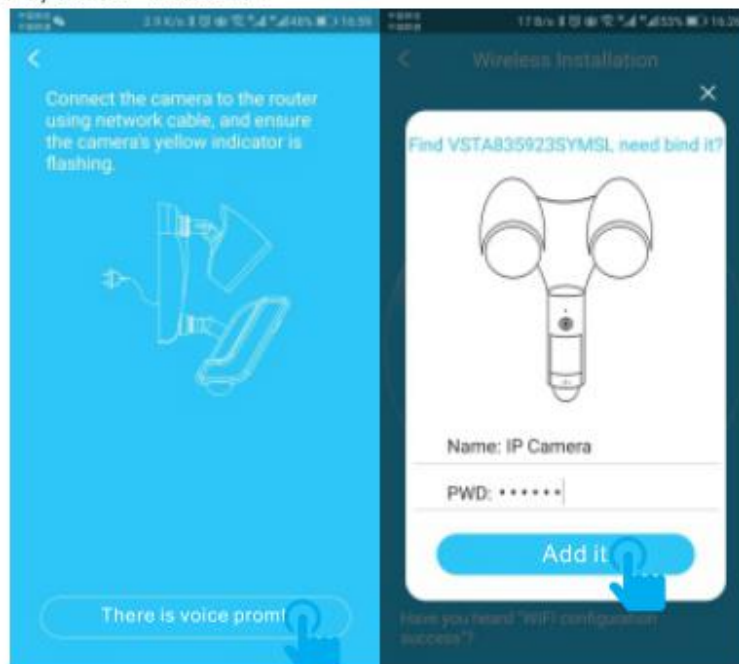
## 7.3 Search in LAN

① Click "Search in LAN", you can find all the available cameras that share the same router with your mobile phone. If added successfully, the floodlight camera could be added through this way by other users which in different account.

**Note:** If floodlight camera which has been added successfully in this account, will not be searched again.



② Click "There is voice prompt", wait about 10 seconds, the binding page will pop up, please enter the initial password, click "Add it".











## 7.4 Manually Add

Click "Manually add", please enter the 15 digits UID that can be found on the label stick to the floodlight camera's body. Or you could scan the QR code on the label, the UID will be filled in automatically, then enter the initial password: 888888, click "Add it".

## 8. Settings


In the home page of the APP · click the  on the top right corner, go to "Parameter Settings", you will get the following menus:


Click the icon to switch the page:    


 **Camera Setting:** You can see the camera's basic information, modify the name of the floodlight camera, set up wireless connection, modify password, upgrade firmware, adjust the brightness of the LED light, adjust the volume of the camera and turn on the light sensor mode.

**White light brightness:** adjustable of the brightness value

**Photosensitive mode:** when the human body is detected under the open state, will be started record the video and the light will automatically light when the is weak.

 **Video Viewing:** setup night vision mode, horizontal and vertical mirror view, adjust light mode, brightness and contrast.

 **SD Card Recording:** can check SD card capacity, setting schedule recording, motion detection recording and select recording sound or not (suggest you to format the SD card before recording to SD card).

 **Alarm:** can turn on/off the motion detection alarm, turn on/off flash light and siren, setup the alarm notification type, and alarm time frame. The sensitivity of motion detection alarm was graded into three level "low/middle/high".

### Motion detection alarm instructions:

Human detection alarm: click the words to switch the three states of "on", "off" and "timing".

### Motion detection sensitivity:

low means that the alarm will not be raised until 3 times of continuous detection;

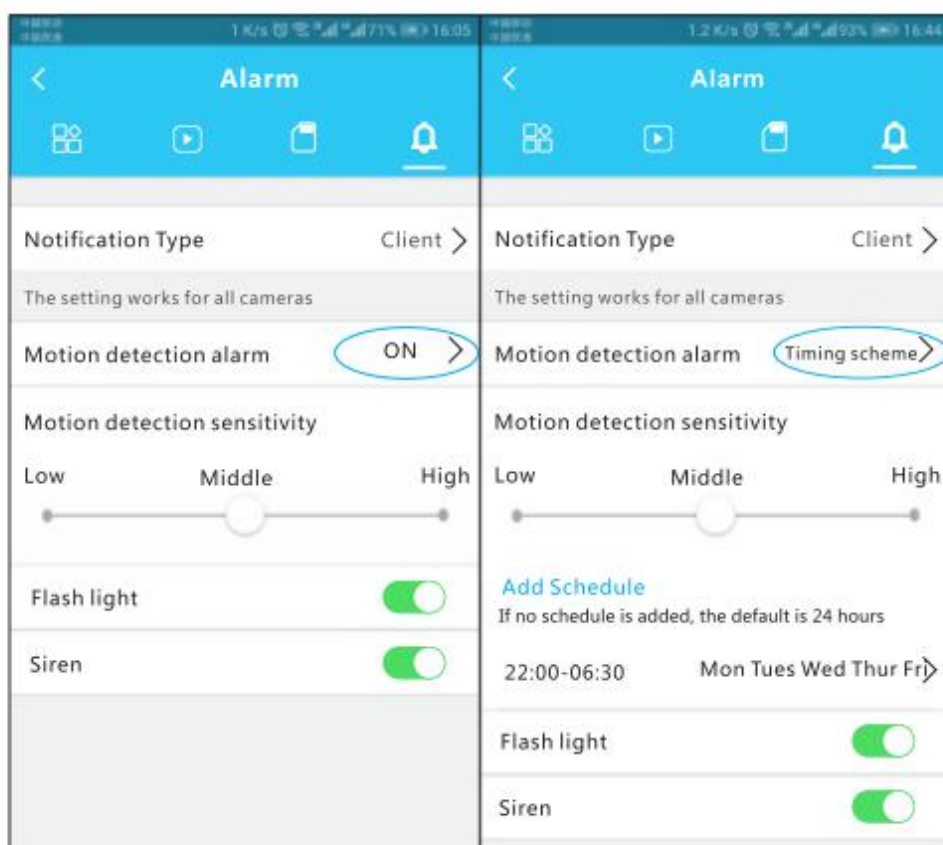
Middle means when detected for 2 times, the alarm will be raised.

High means detects 1 time, the alarm will be given.

**Add Schedule:** click "Add Schedule" to select time period and date for human detection and alarm timing setting

**Flash light:** when it open, human detection triggers will flash

**Siren:** when activated, the human detection trigger will emit a siren sound



## **FAQ**

### **Q: How to reset the floodlight camera to factory default setting?**

A: Press and hold the reset button for about 10 seconds to reset the floodlight camera. It's default password: 888888 (To improve the security, it is highly recommended to modify the initial password).

### **Q: Any tips for WiFi connection?**

A : The floodlight camera supports only 2.4G frequency signal · and 802.11b/g/n WiFi network.

1). The WiFi password should be less than 16 digits, and can not contain special characters, such as @ \$ etc. , suggest you to make a password that contains only letters and number.

2). Please upgrade the APP to the latest version.

### **Q : No vision at night time ?**

A: ① Check if the IR function is enabled or not;

② Check if the IR LED is on or not;

③ Reset the camera back to factory setting;

④ Upgrade the camera to the latest firmware.

### **Q : What to do if camera's picture is blurred?**

A : ① Login the camera's web interface, adjust the picture quality to HD mode;

② Clean the camera lens with a cotton swab.



**3-05-02-007-3015**