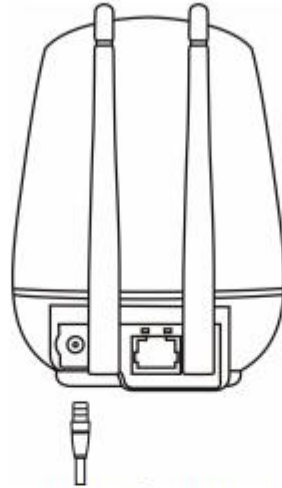


1.Device connection



Please connect camera power.

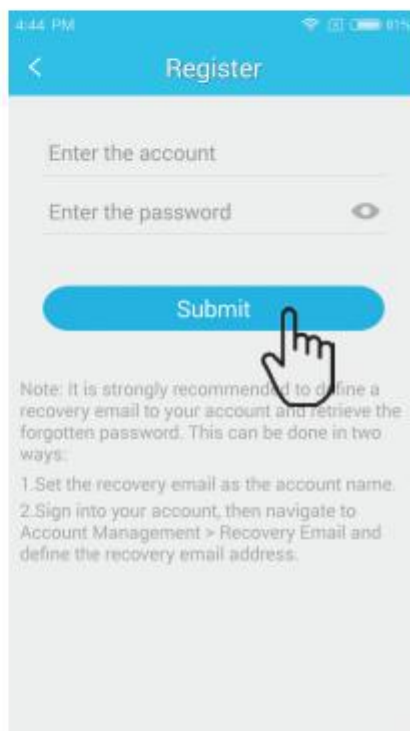
2.Download software

- ① Download from “www.ey4.so” .
- ② Scan to download:




3.Account registration

Android/iOS client click “Sign up now” , input user name and password to finish registration.



4.Add device

Enter APP ,click the top right corner “  ” , Choose IP camera. There are four different ways to add camera: WiFi configuration, Search in LAN, Manually add, and scan QR code to add.

① Quick setup: Place smartphone close to the camera; first time configure needs to input WiFi password same as the phone connected. When APP sounds “One key WiFi connection success” , after about 15 seconds the APP screen will ask to bind the camera,click bind to finish. (Note: If camera has no voice sound after start, please restore back to factory setting.)



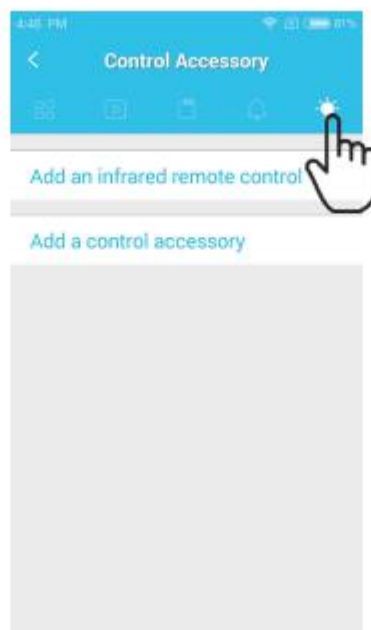
② Search camera in LAN: Click search to find all the available cameras in the same router, input the password to add. (Note: unable to search cameras already added in current Eye4 account)

③ Manually add camera: Input camera UID or scan the camera bottom sticker QR code to add.

Restore back to factory setting: find “Reset” button at the back of the device, connect power, long press the reset button for about 10 seconds. Default password is: 888888

5.Code matching


Enter APP, click camera top right corner icon “ ⋮ ”,--- choose parameter---- Accessory control.



5.1 Add IR remote control

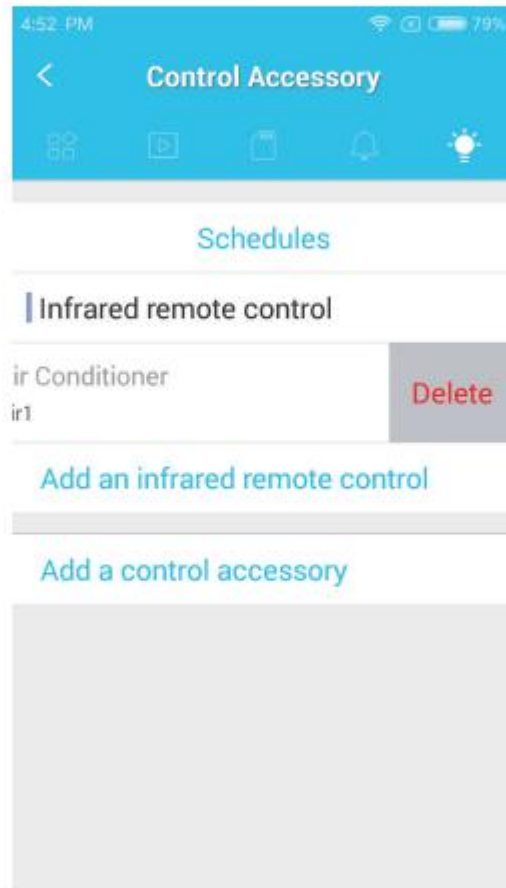
5.1.1 Enter parameter setting—accessory control—add IR remote control , choose corresponding appliance type and brand. Follow up the APP instructions, camera will response to the successfully added remote control.



5.1.2 Unknown or other brand appliances remote control can use custom code learning (study the function keys one by one), follow APP instruction to learn the code. Click  after finish learning all the function keys——Completion——Added successfully.

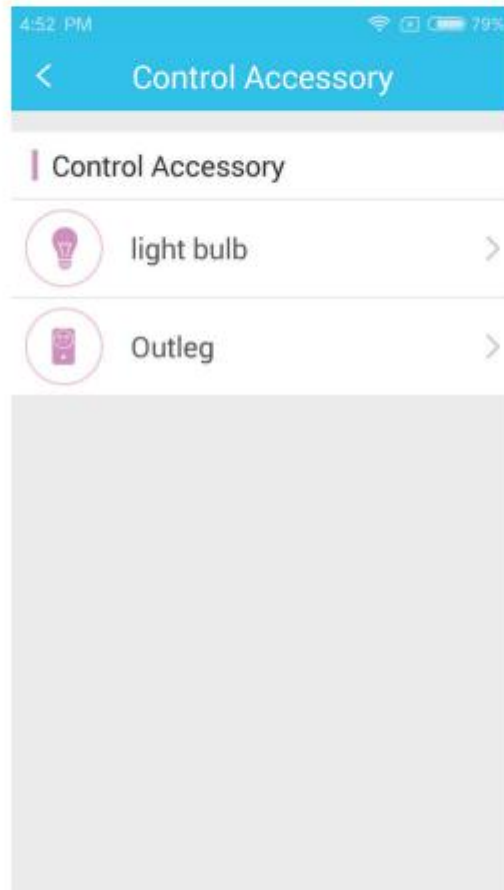


5.1.3 The added remote control will show in the accessory control list, slide left can delete.

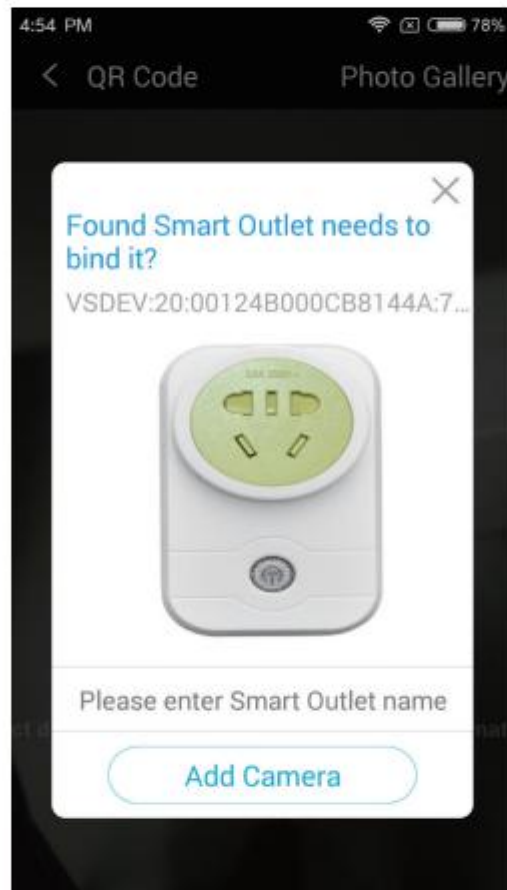


5.2 Add ZigBee control device

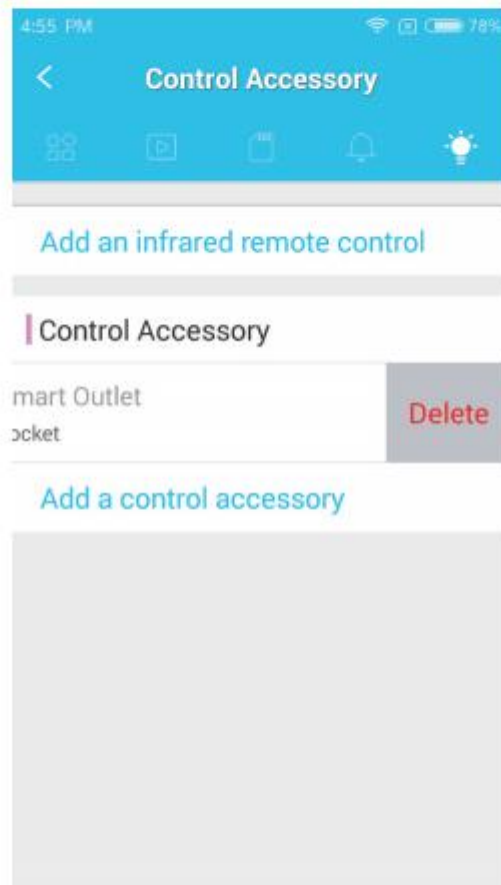
5.2.1 Enter parameter setting—accessory control---add accessory—choose corresponding accessory type.




5.2.2 Scan the accessory QR code (can find the code on the package) to add, can rename and bind the accessory.

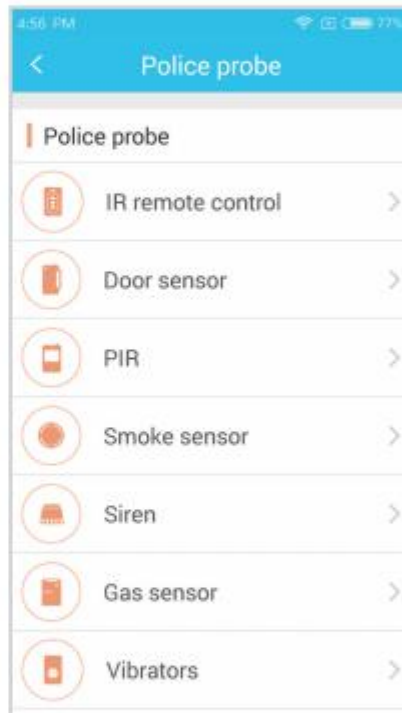
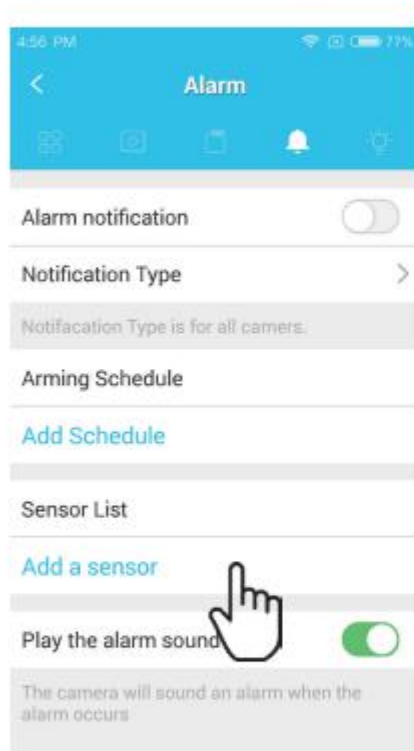


5.2.3 Success added sensor will show in the list, slide left can delete the sensor.

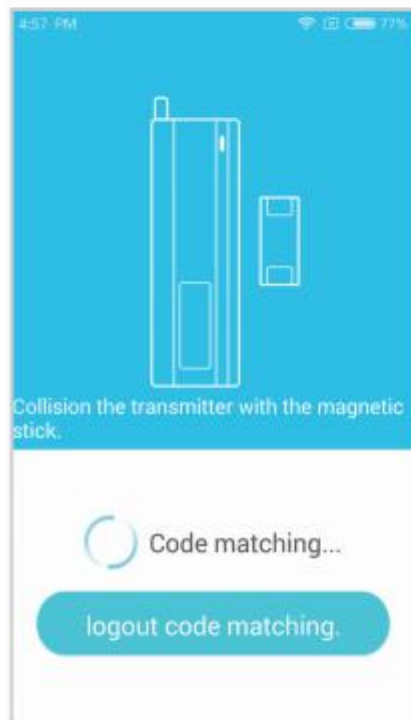


5.3 Add RF alarm detector

5.3.1 Enter parameter setting, choose “” —select sensor—choose sensor type to add.



5.3.2 Follow the animation instruction to do the detector code matching. (Repeat this action to add multiple detectors)

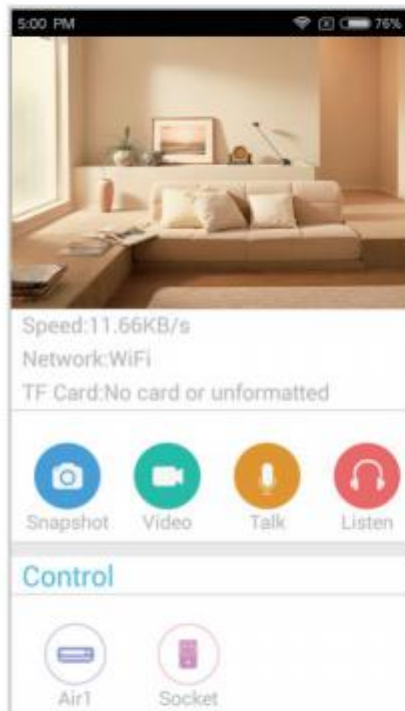


6.Control


Return back to the APP home page after finish add all the sensors, click camera to view the real time video. All the added remote control and accessories can be viewed from the **【control】** menu bar.

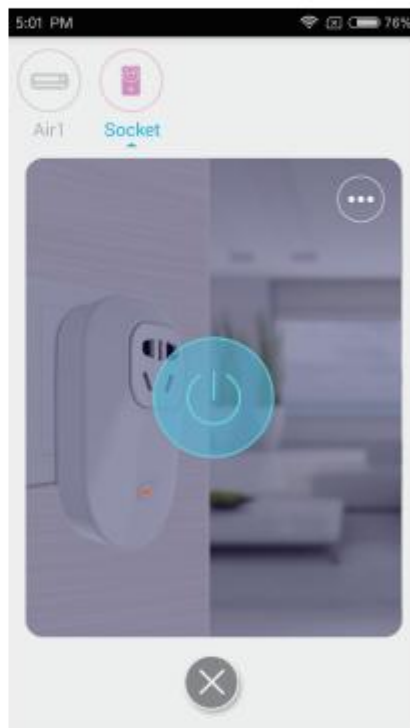
6.1 Remote control

6.1.1 Click remote control to enter control interface under **[video]** interface.




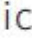

6.2 ZigBee control accessory

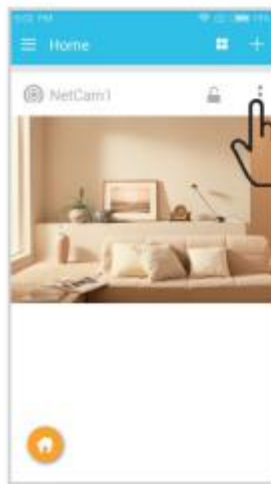
6.2.1 Click Zigbee device in **【video】** to enter control interface, as below shows: (Click  upper right corner for more.)



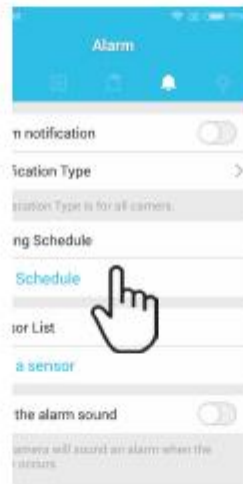
6.3 Alarm detector

6.3.1 Click pic 1 shown APP icon  , can arming and disarming individual alarm camera.

6.3.2 Click pic 1 right up corner  --parameter setting—in choose  in pic 2---add time schedule; enter pic 3 interface can setup the camera arming and disarming schedule.



Pic 1



Pic 2

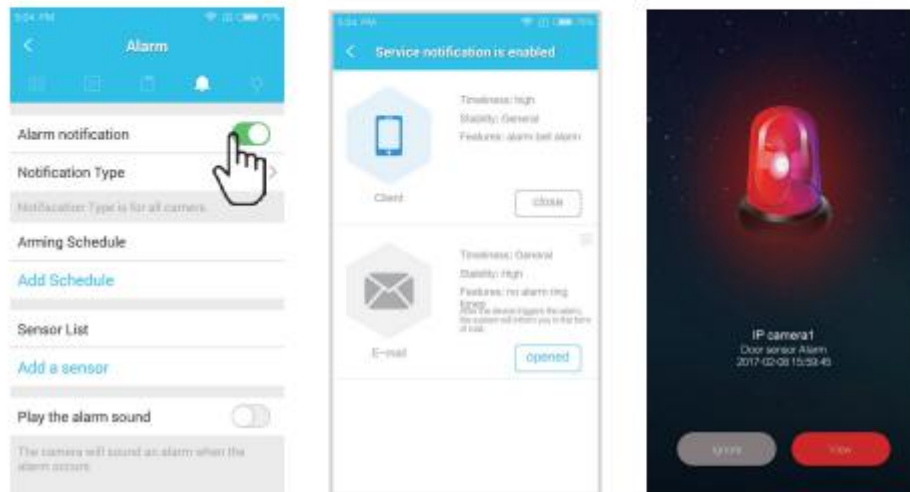


Pic 3

7.Push notification

① Enable the alarm notification function (Refer to 6.3.2 alarm setup);

- ② Setup the alarm to remind method ;
- ③ Receive alarm push notification (Only when the alarm camera is armed, and sensors is triggered);



8. Message center

Message center will record the alarm camera or normal IP camera motion detection alarm log, and alarm time, click can view the real time video.

9.Service

If you have any question, please contact our aftersales service team:

Skype: support3@vstarcam.com

Email: support@vstarcam.com;

More info visit: <http://FAQ.ey4.so>;

Shenzhen VStarcam Technology Co.,Ltd

<http://www.vstarcam.com>

The manual is made based on the eye4 4.0 version, the interface will be some different cos of the app update.Please refer to the actual version as standard .



3-05-01-007-4032