

USER MANUAL



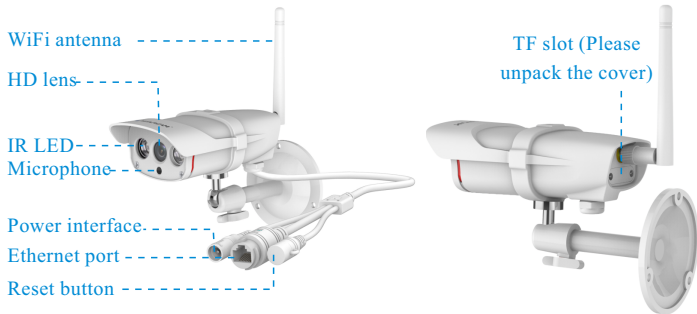
My safety, My rule!

Video Tutorial

If it is your first time to use our products, it is recommended to scan the following QR code to watch the video tutorial.



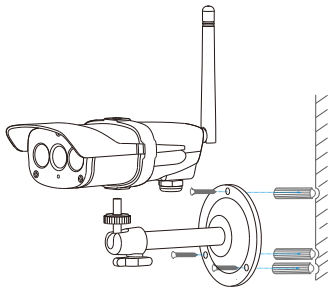
Product Description



Reset Camera:

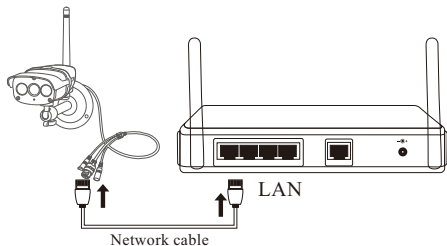
- 1 Power on the camera, wait for the camera to finish booting.
- 2 Using a screwdriver to unscrew and open the back cover.
- 3 Hold the reset button for about 5 seconds until the camera makes a crisp sound.

Camera Installation



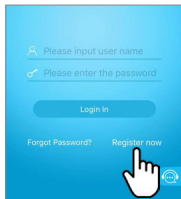
- 1 Punch the hole according to the hole position of the bracket.
- 2 Embed the expansion rubber plug.
- 3 Fix the bracket with screws and fix the camera on the stand.

Step 1 : Pre-Setup



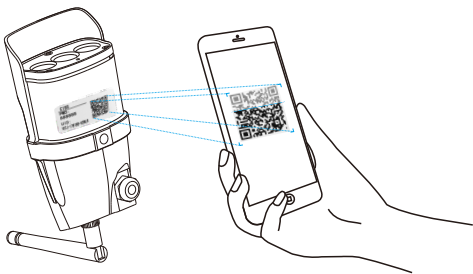
- ☒ Connect your phone to the WiFi network (2.4GHz only).
- ☒ Make sure the phone and camera are connected to the same router.
- ☒ Powering on the camera and wait for about 30 seconds for the camera to finish booting.
- ☒ Please connect the camera to the LAN port of the router with a network cable.

Step 2 : APP Download and Registration

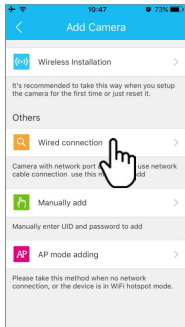
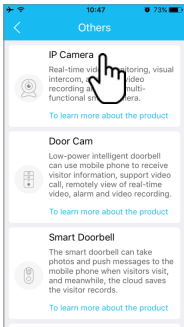


- 1 Search for "Eye4" in App Store or Google Play, or scan the QR code to download the app.
- 2 Click "Register", enter the user name and password to complete the registration, and also supports the third party such as Facebook to login directly.

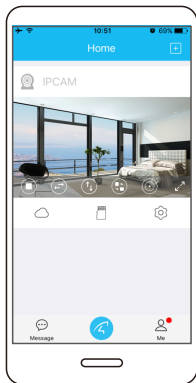
Step 3: Add Devices to the APP



- 1 Open the app, click the "+" in the upper right corner , and scan the QR code on the body of the camera, then follow the prompts on the app to complete the adding. (Note: For Android phone, it will pop up some system permission window, please select "Allow")



- 2 If you can't find the QR code, click the "+" in the upper right corner, select "Others" on the bottom right corner --- "IP Camera"--- "Wired connection", then follow the prompts on the app to complete the adding.



You're Done!

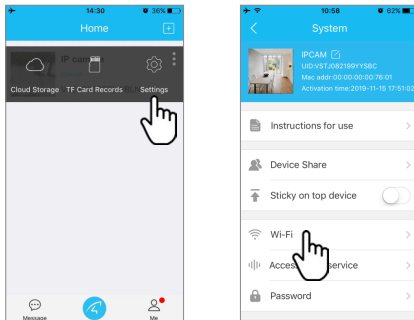
Wait about 30 seconds, APP will search for the device, click "Bind" to complete the configuration. Or select "Configure WiFi" and enter the WiFi password to complete the configuration.

Please write down your device information:

Eye4 account name: _____

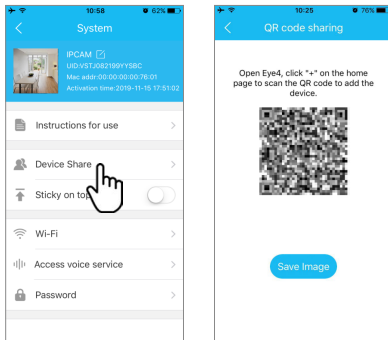
Eye4 account password: _____

Configuring WiFi



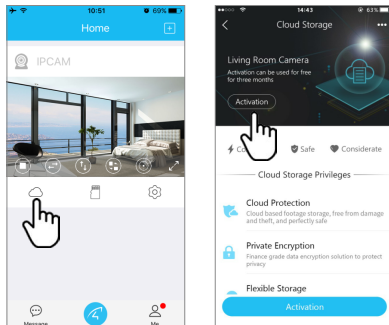
Please click "Settings", select "WiFi ", select the WiFi you want to connect, enter the WiFi password. Wait about 60S until the restart of the camera finished, you can unplug the network cable to complete the configuration.

Device Share



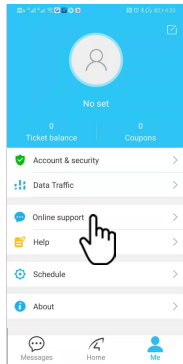
Click "Settings", then select "Device Share"--- "QR Code Sharing". Other users can open the app and click the "+" in the upper right corner of the homepage to scan the QR code to add the device.

Cloud Storage



The camera supports cloud storage service. After activated the cloud storage service, when the motion detection is triggered, the video will be uploaded to the cloud storage server immediately, and the video can be viewed even if the camera is stolen.

After-Sales Service



If you have any questions, please contact our customer service: Click on "Me" in the lower right corner of the APP. Select "Online Customer Service".

Online customer service:

AM 8:30-12:00 PM 13:20-17:50 Night 19:00-23:00
on weekdays (UTC+8)

Official Mall : <https://shop.vstarcam.com/>

F A Q : www.vstarcam.com/support

Email : support@vstarcam.com



3-05-01-007-3039

物料编号：3-05-01-007-3037

封面材质：128g铜版纸（封面/封底过光膜）

内页材质：128g铜版纸

尺寸：120x80mm

颜色：四色印刷

装订方式：骑马钉（一个钉）