

USER MANUAL |

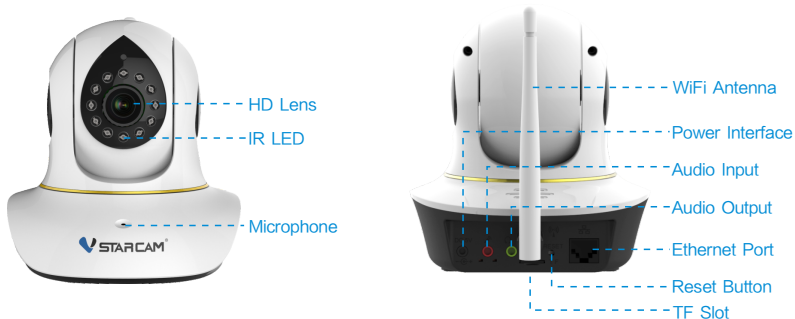
My safety, My rule!

Video Tutorial

If it is your first time to use our products, it is recommended to scan the following QR code to watch the video tutorial.



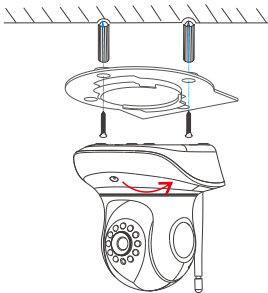
Product Description



Reset Camera:

- 1 Power on the camera and wait for the boot to complete.
- 2 Using a needle to hold on the reset button for about 5 seconds until you hear a prompt "Reset completed".

Camera Installation



- 1 Punch the hole according to the hole position of the bracket.
- 2 Embed the expansion rubber plug.
- 3 Fix the bracket with screws.
- 4 Rotate the camera counterclockwise to mount it on the bracket.

Step 1 : Pre-Setup

- ✓ Connect your phone to the WiFi network (2.4GHz only).

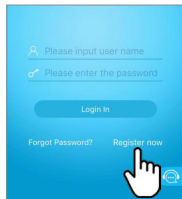
- ✓ Place the camera within 2 meters of the router during configuration.



- ✓ Power on the camera and wait for about 30 seconds to finish booting.

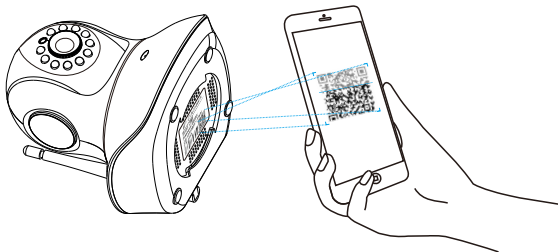
- ✓ **If it is your first time to connect the camera, there is no need to reset it.** If you cannot hear " Please use APP for WiFi configuration" when the camera startups , please reset the camera. **Reset method:** Using a needle to hold on the reset button for about 5 seconds until you hear"Reset completed" (You can find the reset button from "Product Description")

Step 2 : APP Download and Registration

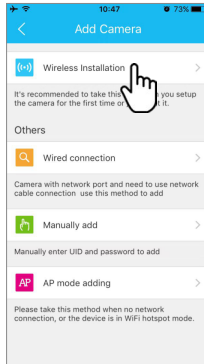
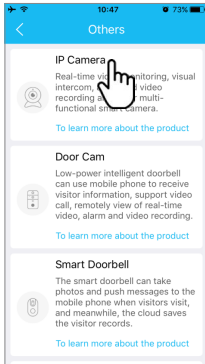


- 1 Search for "Eye4" in App Store or Google Play, or scan the QR code to download the app.
- 2 Click "Register", enter the user name and password to complete the registration, and also supports the third party such as Facebook to login directly.

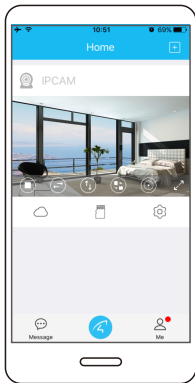
Step 3: Add Devices to the APP



- 1 Open the app, click the "+" in the upper right corner , and scan the QR code on the body of the camera, then follow the prompts on the app to complete the adding. (Note: For Android phone, it will pop up some system permission window, please select "Allow")



- 2 If you can't find the QR code, click the "+" in the upper right corner, select "Others" on the bottom right corner --- "IP Camera" --- "Wireless installation", then follow the prompts on the app to complete the adding.



You're Done!

When you hear the camera prompts "Wireless connection is successful", wait for about 30 seconds, the binding page will appear on the app, click "Bind" to complete the adding.

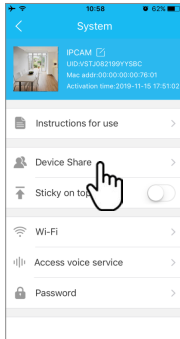
Note: If the connection fails, please try to add it with a network cable connection, or seek assistance from online customer service.

Please write down your device information:

Eye4 account name: _____

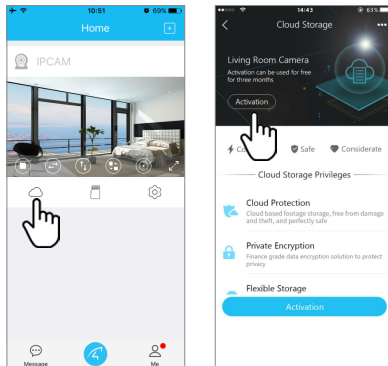
Eye4 account password: _____

Device Share



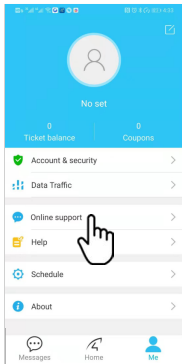
Click "⚙️" on the right corner, then select "Device Share"--- "QR Code Sharing". Other users can open the app and click the "+" in the upper right corner of the homepage to scan the QR code to add the device.

Cloud Storage



The camera supports cloud storage service. After activated the cloud storage service, when the motion detection is triggered, the video will be uploaded to the cloud storage server immediately, and the video can be viewed even if the camera is stolen.

After-Sales Service



If you have any questions, please contact our customer service: Click on "Me" in the lower right corner of the APP. Select "Online Customer Service".

Online customer service:

AM 8:30–12:00 PM 13:20–17:50 Night 19:00–23:00
on weekdays (UTC+8)

Official Mail: <https://shop.vstarcam.com/>
F A Q : www.vstarcam.com/support
Email : support@vstarcam.com



3-05-01-007-3041

物料编号：3-05-01-007-3041

封面材质：128g铜版纸（封面/封底覆光膜）

内页材质：128g铜版纸

尺寸：120x80mm

颜色：四色印刷

装订方式：骑马钉（一个钉）