

注意事项:

- ① 太阳能板为玻璃制品, 请注意防护。
- ② 首次使用建议先充满电再开机。

Note:

- ① The Solar panel is made of glass, please be careful.
- ② It is recommended to charge the battery before starting it up for the first time.

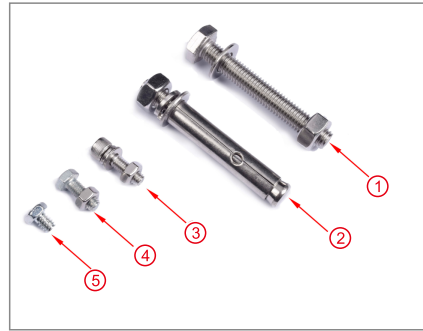
包装清单

Package List

图片 (Picture)	名称 (Name)	数量 (Qty)
	太阳能板 Solar panel	1个 1pc
	太阳能电池 Battery	1个 1pc
	主杆 The main pole	1个 1pc
	监控支架 Stand of the camera	1个 1pc
	抱柱固定片 Post holder	1个 1pc
	螺丝 Screws	1个 1bag

螺丝分类与数量图:

Screw classification and quantity:



- ① x4PCS
- ② x4PCS
- ③ x6PCS
- ④ x2PCS
- ⑤ x2PCS

注: ①号螺丝用于电线杆固定
②号螺丝用于墙壁固定

Note: Screw ① is used for pillar fixing.
Screw ② is used for wall fixing.

安装工具准备 (厂家不提供, 请自备):

Installation tools (Please note that tools are not provided by the manufacturer.):



- 十字螺丝刀*1
- 10号扳手*1
- 活动扳手*1
- 5号内六角扳手*1

Phillips screwdriver *1
No. 10 wrench *1
Adjustable spanner *1
No. 5 hexagon socket wrench *1

安装步骤:

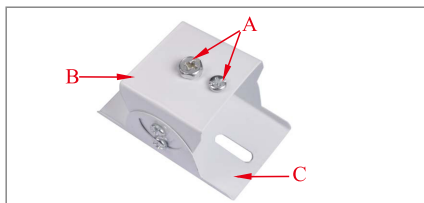
一. 先将主杆与监控支架安装好

Installation steps:

1. Install the stand of the camera to the main pole.

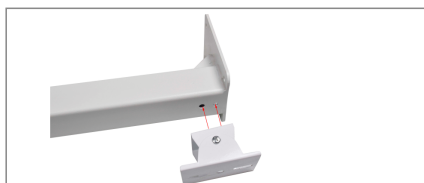
- ① A 先将两个螺丝拧松
B 此面接主杆
C 此面接摄像机

A Firstly, please loosen these two screws.
B This side is connected to the main pole.
C This side is connected to the camera.



- ② 注意区分大小螺丝

Note the difference between size screws.



- ③ 从主杆底部的孔里把螺丝拧紧, 固定好监控支架和主杆
Tighten the screws from the hole at the bottom of the main pole, to secure the camera stand and main pole.



- ④ 监控支架与主杆固定完成
The camera is fixed with the main pole.



二. 将主杆安装到电线杆或者树上

用①号螺丝将抱柱固定片与主杆固定在柱子上

2. Install the main pole on a pillar

Use the screw ① to fix the post holder and the main pole on the pillar.



三. 安装太阳能板

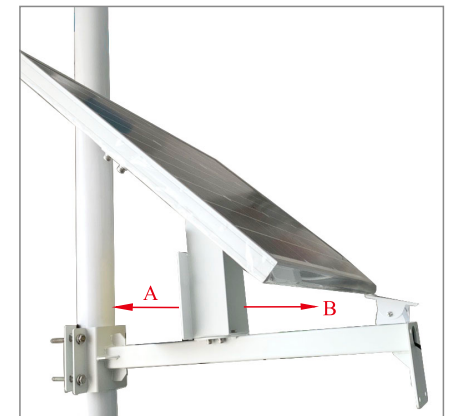
将太阳能板背板扬起, 固定到主杆上

- A 加宽面朝固定杆
- B 窄面朝向监控支架方向

3. Install the solar panel

Raise the back panel of the solar panel and attach it to the main pole.

- A Widen side faces to fixed pillar.
- B The narrow side faces to the camera stand.

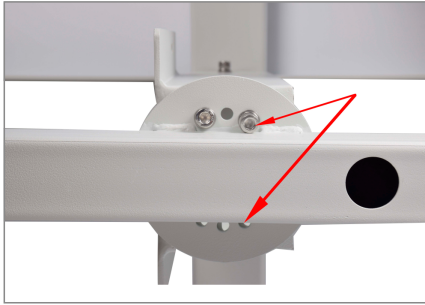


- 1) 太阳能背板与主杆连接螺丝孔对齐
1) The solar back panel is connected to the main pole.

Align screw hole



- 2) 两侧各安装两个③号螺丝
2) Install two screws ③ on each side.



六.调整太阳能方向

调整好太阳能板方向后, 两边可各用一个③号螺丝固定

6.Reorient the solar panel

After adjusted the direction of the solar panel, each side can be fixed with a screw ③.



四. 安装太阳能电池

把太阳能电池锁在背板上

4.Install the solar battery

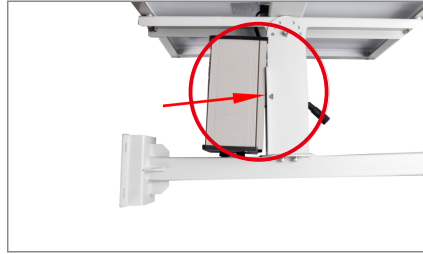
Lock the solar battery to the back panel.

- 1) 将两个④号螺丝从两边放下去
1) Lower the two screws ④ from both sides.



- 2) 扶着电池, 调整好电池位置, 对准背板上的螺丝孔, 将螺丝锁紧。

2) Hold the battery, adjust the battery position, align the screw hole on the back panel, lock the screw tightly.

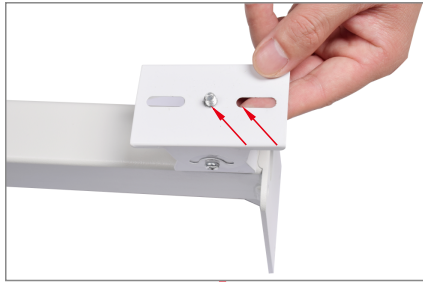


七.将摄像机安装到监控支架上

用两个⑤号螺丝将摄像机锁到这两个孔里, 固定好

7.Install the camera on the stand

Use two screws ⑤ to lock the camera into the two holes and secure it.



五.连接太阳能电线

将太阳能电池上的电源线与太阳能板上的线接好, 接口处套上防水套。

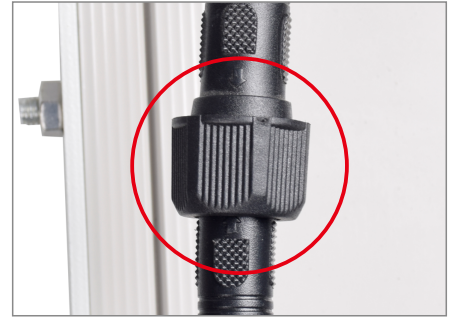
5.Install the solar battery

Connect the power cord on the solar battery with the cord on the solar panel, put a waterproof jacket on the joint.

- 1) 注意匹配接口
1) The interface need to be matched.

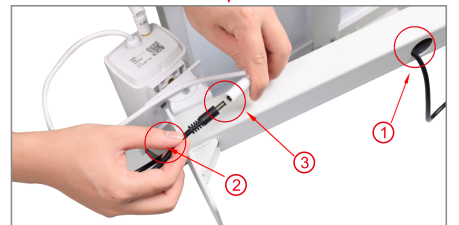


- 2) 接口处套上防水套
2) Put a waterproof jacket on the joint.



最后将太阳能电池上的另一根线从主杆底部的孔中往监控支架方向穿过去, 从主杆头部穿出, 与摄像机电源线连接好。

At last, pass another wire on the solar battery through the hole at the bottom of the main pole to the direction of the camera stand, through the head of the main pole, and connect it with the power cord of the camera.



- ① 太阳能电池上的线从这里穿进去
② 把线从这里穿出
③ 与摄像机电源线连接

注意: 按步骤依次穿入

- ① Put in the wire on the solar battery here.
② Pull out the wire here.
③ Connect it with the camera power cord.

Note: Follow the steps ① → ② → ③.