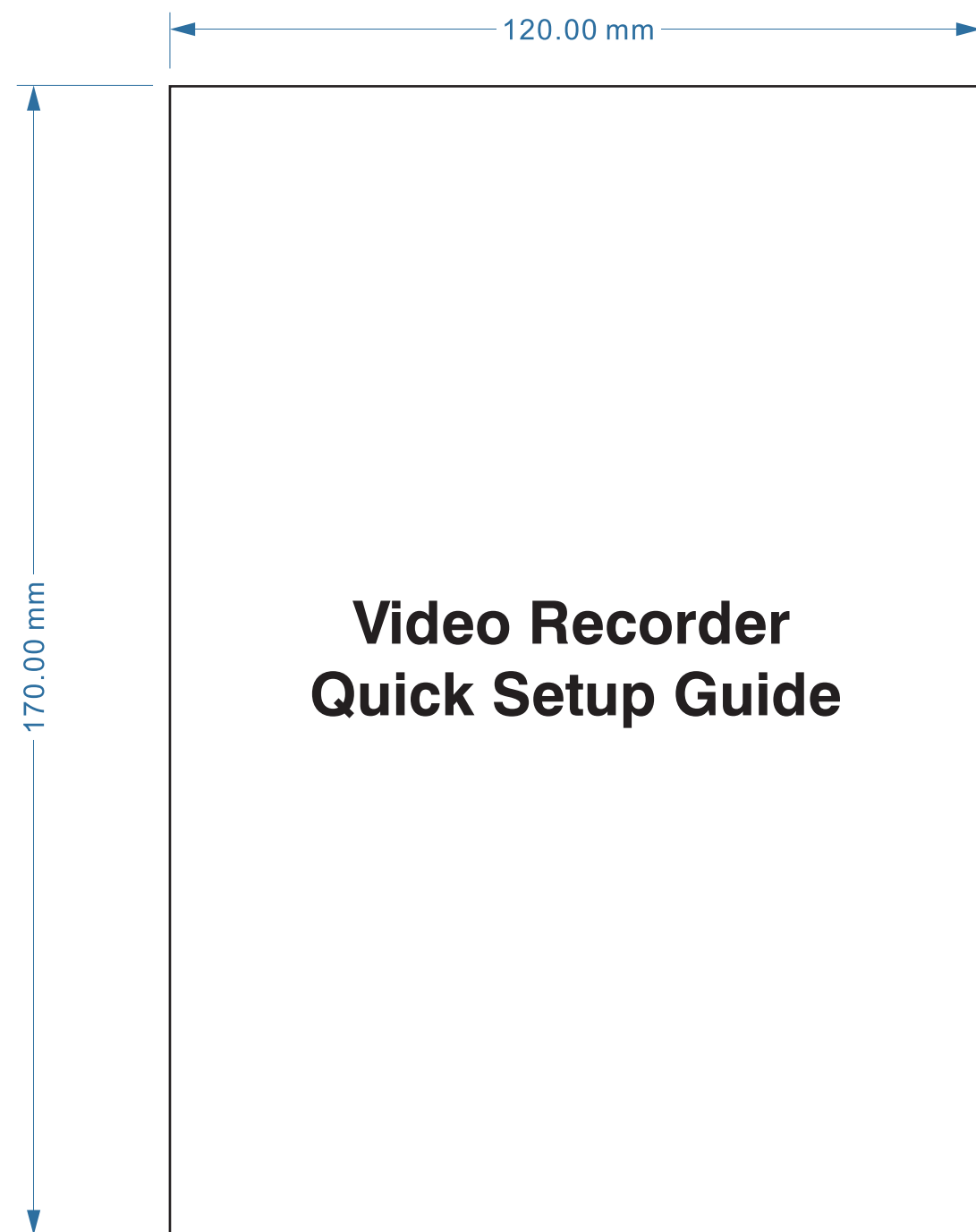


材质:128克铜版纸
尺寸:120*170mm
要求:四色印刷+风琴折

正面



Video Recorder Quick Setup Guide

Thank you for purchasing our products!
Declaration:
This manual may contain inaccurate data or printing error.
The products described in this manual may be updated at any time.
Screenshots of the manual is not in a machine and only for display.
If in doubt, obtaining a copy of the latest procedure or the additional document, please contact with the company's after-sales department.

Important Safeguards and Warnings
1. **Electrical safety**
All installation and operation should conform to your local electrical safety codes.
We assume no liability or responsibility for any fires or electrical shock caused by improper handling or installation.
2. **Transportation security**
Heavy stress, violent vibration or water splash should be avoided during transportation, storage and installation.
3. **Installation**
Keep upright. Handle with care.
Do not apply power to the NVR before completing installation.
Do not place objects on top of the NVR.
4. **Qualified engineers needed**
All examination and repair work should be done by qualified service engineers.
We are not liable for any problems caused by unauthorized modifications or attempted repair.
5. **Environment**
The NVR should be installed in a cool, dry place away from direct sunlight and inflammable or explosive substances, etc.
This product should be transported, stored and operated in an environment ranging from 0°C to 55°C.
6. **Accessories**
Before installation, please open the package and check all the components are included.
Contact your local Maplin outlet if something is broken or missing in your package.
7. **Lithium battery**
Improper battery use may result in fire, explosion, or personal injury.
When replacing the battery, please make sure you use the same model. (CR2032 Motherboard battery).

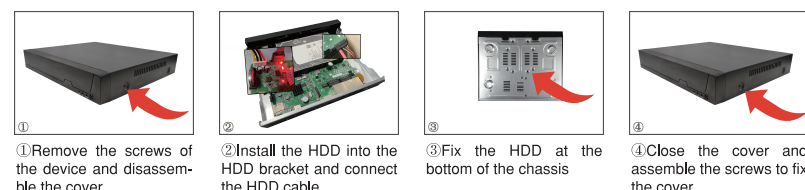
Installation

1.1 Unpacking Inspection

When you receive the product please check that all items are present according to the packing list on the reverse of the box.

1.2 HDD Installation

Tools: A cross screwdriver



-1-

1. The environment temperature should below 35°C.
2. Make sure has a 15 cm (6 inches) space around the device to ventilate.
The initial installation please check whether has installed HDD. There are several interfaces it means you can install several SATA interface HDDs.

Note:
1. Our equipment will format the HDD once it boot up, please back up the HDD data.
2. The notes for purchasing HDD: We recommend that to use the surveillance HDD. It is suitable for long time, large amount of data to read and write. Please purchase from the official channels to ensure the quality.

Basic Operation Guide

2.1 Power On

Install the NVR correctly (as above) and then connect the power. The NVR LED should light up and the NVR will boot automatically.

The NVR will automatically detect any connected hardware (cameras, monitors, etc.), this process should last about 50 seconds. You will hear "beep" sound. That means the process has completed. The NVR will enter into the multi-screen real-time surveillance mode. If the current time which the NVR displayed is in the recording plan time period, the NVR will start recording based on the plan.

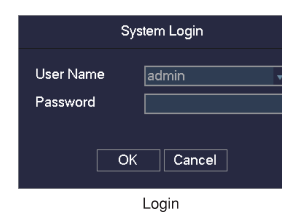
2.2 Power Off

There are two ways to shut down the NVR:
1. Right mouse click-[Main Menu]-[Shut Down].
2. Unplug the power cord, not recommended.

2.3 Log In

Right click to log in menu. Enter username and password.

Note: the default administrator account is admin, the default password is 123456. Users can modify the password but the authority. The administrator can add, delete modify other accounts' parameters.

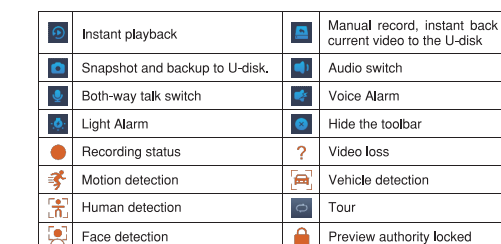


Password: if enter error password more than 6 times, the NVR will beep, and the account will be locked. Shut down the device then re-power it or leave the device about 5 minutes, the account will unlock automatically. To be safety, we recommend you to modify the password before settings.

-2-

2.4 Preview

After you logged in, the system is in live viewing mode. You can see system date, time, channel name.



Live view

2.5 Channel Management

[Main Menu]-[CHANNEL] to set the channel's parameters.

2.5.1 Mode Switch

[SmartMode] This is the local intelligent, the rule setting please check the user manual.

Note: Features in the image is only available on certain devices. Image in this section showing the device's menu system may differ to menu system on the device you are using.



Mode Switch

2.5.2 IP Channel

[Batch Add] Click [Search] button to search out the IP equipment in the LAN, and tick the checkbox to select the IP equipment, then click [Add] button to add them.

[Manual Add] Click [Add] button, then enter the correct parameters to add the IP equipment.

[Search] Search all the IP equipment in the network environment.

[Batch Delete] Tick the checkbox to select the added equipment, then click [Delete] button to delete them.

[Delete] Click [-] button to delete the target.

[Open UPnP] Click the button, cameras in the LAN will be added automatically.

[Status] Click the button will pop up a new interface to show the IP channel status.

[Open Cross] Click the button to realize the cross-network segment search function of ONVIF protocol.

[Advanced] Click the [advanced edit] button can modify the front-end equipment's parameters.

Note: Features in this section only for the devices which support IP channels.



IP Channel

-3-

封面

反面

2.5.3 Video Encode Configuration

Right click the mouse to access into [Main Menu]-[CHANNEL]-[Encode] to configure the encoding parameters.

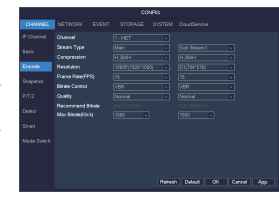
[Compression] H.264/H.265.

[Resolution] Choose main resolution and sub resolution.

[Frame Rate] 1~25FPS/PAL, 1~30FPS/NTSC.

[Max BitRate] After adjusting the biggest bit rate, the video bit rate will fluctuate a little.

Note: Features in the image is only available on certain devices. Image in this section showing the device's menu system may differ to menu system on the device you are using.



Encode

2.6 PTZ Control

Follow the below steps to control PTZ.

Right Click the mouse, click [PTZ] in the right-click menu to access the PTZ control interface.

[Speed] The value range is 1-8. The value is bigger, the extent is bigger.

[Zoom] [Focus] [Iris] Click [] to adjust.

[Present] Enter present figure in box and click "Present" button to call present function.

[Tour] Enter cruise figure in box and click "Cruise" button to call cruise between points function.

[Patrol] Enter patrol figure in box and click "Patrol" button to call patrol function.

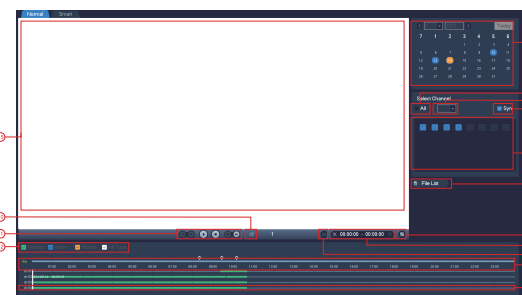


PTZ Control

2.7 Playback

Accessing into [Main Menu]-[Search] to do the playback operations.

Note: the HDD must be the RW HDD or Read HDD, the file in the HDD can be playback.



-4-

Index	Type	Description
1	Choose the date	Select the time and date to search records.
2	All Channel Select	All select, all cancel
3	Time bar channel	When you select the number of channels is more than 4, a channel number value for the timeline display
4	Synchronization	Activate the playback of each channel's record is of synchronization in time and of consistency in operations.
5	Select channels	Choose the channels for querying.
6	List	Show the status information of channels' video recording within one day by green, red, yellow.
7	Full Screen	Full screen the playback window.
8	Cut backup	Choose the start time and end time, will automatically back up the selected video files.
9	snap	Snap the video to the USB disk.
10	Audio Switch	Open/close the audio.
11	Playback control	Stop/Play, Pause, Fast, Slow, Previous Frame, Next Frame.
12	Search Type	128 video records are shown in the list. Type: R-normal record, A-alarm record, M-motion detection record.
13/14	Timeline display	Green, red and yellow colors show the video recording in the one day
15	Playback window	Playing video.

Special Functions:

Accurate Playback: support search by time. Enter the desired recording time (hour, minute, second), recording type, channel number, then click [Play] button to search out the correct recording file.
Digital zoom: Moving the mouse to the image, then you can scroll the mouse wheel to zoom. (The zoom focus is where the mouse stays)

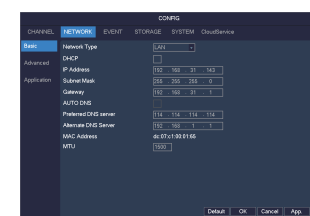
2.8 Network

2.8.1 Network Setting

[Main Menu]-[NETWORK]-[Basic] to set network:

[IP Address] Default IP is 192.168.1.88.

[DHCP] Enable the DHCP to obtain an IP address automatically. If it is enabled, the device will search for a DHCP server, and then assign a dynamic IP address. The dynamic IP address will be displayed in the menu. Enter a static IP address if there is no DHCP service available. If you are using the advanced feature PPPoE, then the IP/mask/gateway and DHCP are unable to be changed.

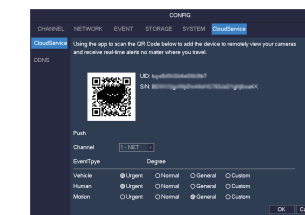


-5-

2.8.2 Cloud Service

[Main Menu]-[Cloud Service] to check the UID, s/n, etc.

User App to scan the QR-code to add the device to live view.



2.8.3 WEB Access

Check whether the NVR is on the network. Open one browser and type the NVR IP and HTTP port into the browser address bar.

E.g. the device's default IP is 192.168.1.88 and HTTP port is 80, then you should type <http://192.168.1.88> into the browser address bar.

If the http port was changed, such as HTTP port is 90, then you should type <http://192.168.1.88:90> into the browser address bar.

Note: the first time accessing the website need to install ActiveX. Please allow to install or install it manually. (The setting steps please refer to "IE ActiveX Installation Guide").

2.8.4 Client Access

Mobile Phone Application Access

1. Turn on the device power, you will find a "Startup Wizard" displayed on your monitor. Scan the corresponding QR code to download the app.

Note: we support Android system and IOS system.

2. Run the app and press the button "+" to add new devices.

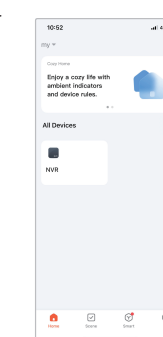
Note: the detail operation please refer to "help" built in the application.



iOS



Android



-6-

Statement

- This manual describes basic operations. More details please refer to the main manual.
- Any doubt or dispute in product description, the company interpretation will ultimately prevail.
- This Quick Setup Guide is for quick reference to certain NVR models, the specific operation of each product is not listed, when you have encountered any difficult problems, please contact us.



3-05-02-007-4089